

## Coleham Pumping Station



Shrewsbury Steam Trust

Newsletter

March 2014

Articles and items of interest for future publication in this newsletter can be forwarded to [newsletter@colehampumpingstation.co.uk](mailto:newsletter@colehampumpingstation.co.uk) or direct to the editor.

The web site developed last year is creating interest, with 1,258 visits world wide and 1116 from the United Kingdom since May last year. Visitors on open days last year who signed the visitors book came from Turkey, Hungary, Spain and Canada. Other interested people came from Surrey, Cheshire, Leicester and one who came just for the day from Barnsley.

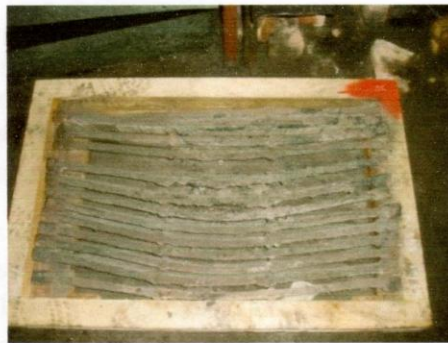
**Winter Maintenance.** Cleaning / inspecting the boilers and flues by Paul Roberts and Ron Targett. Commenced in October and is now finished.



All valves and covers have been removed from the boiler, cleaned, inspected and the seats of the main steam and dead weight valves are refurbished. Also the fire grate and fire bars were removed ready for inspection.

The boiler inspector has passed the cleaned boiler. We await the final inspection with safety tests when the full steam pressure is available.

The fire Bars used since 2000 are bent and because they are made of cast iron can not be straightened.



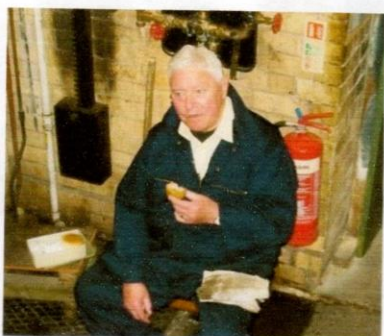
The proposal is to replace the cast iron bars with fabricated mild steel, which in future can be straightened and weld repaired as required. The material to make new is now on order.



Chief Engineer at work



## Bob Edwards



Bob Edwards a long term volunteer of the Shrewsbury Steam Trust and Bliss Hill passed away in January. Before retirement he spent time at sea and worked on inspection of large boilers and reminded us that all pressure vessels including restaurant coffee machines, needed to be inspected annually.

On working Sundays and Thursdays. Bob always enjoyed painting, spending many hours painting the wire mesh safety guards around the engines and any walls that needed a new coats of paint.

In more recent times he would come on open days and always asked what he could do. He would stoke the boiler or look after number one engine always keeping an eye on the main bearings.

## Members Corner - Lorraine Evans

My husband Mike and I first became involved with the Pumping Station shortly after coming to live in Shrewsbury in September 2009. We were sitting on our terrace one morning, when we noticed black smoke pouring from a tall chimney on the other side of the river. We set off to find the cause of this smoke and found the Pumping Station was having an open day!

We had a very interesting tour of the building and decided there and then to become members of the Shrewsbury Steam Trust. One thing led to another, and Mike and I started acting as volunteers on open days. As the technicalities of running steam engines is not my particular area of expertise, I quickly found my niche: I clean the toilets and also help to polish the considerable amount of brass railings in preparation for open days

Then I found another way to help with open days – years of owning (and mucking out) horses meant that I was a natural stoker, and I thoroughly enjoy doing this. It can be quite a challenge between having enough fire in the boiler to run the beam engines, and having too much!

## Other News

- The structure of the roof on the old shed in the yard at the rear of the buildings, has become unsafe due to water leaks which has corroded the roof 'A' frame. Al Ingle and Dave Paddock with help from Alan Brown have rebuilt the 'A' frame and replaced sections of the corrugated sheets.



- The overhead crane in the engine room is in the process of been painted following the painting of the beams.
- Equipment under the main floor in the engine room was cleaned and painted during the winter.
- Michael Glover: Editor